

# CANBERRA THEATRE CENTRE

Courtyard Studio

## **Technical Specifications**

### **Schedule 13**

Updated  
19/08/19

**The information in the following document was true and correct at the time of printing**

**The Canberra Theatre Centre reserves the right to adjust its inventory and specifications  
without notice**

# Contents

|  |    |
|--|----|
| STAFF CONTACTS.....                      | 4  |
| STAGE.....                               | 5  |
| Auditorium.....                          | 5  |
| Quantity .....                           | 6  |
| Access Equipment.....                    | 6  |
| Stage Covers .....                       | 6  |
| Loading Dock.....                        | 6  |
| Rigging Notes .....                      | 6  |
| Staging Notes .....                      | 6  |
| Parking .....                            | 6  |
| LIGHTING.....                            | 7  |
| Positions.....                           | 7  |
| Control .....                            | 7  |
| Dimmer Racks .....                       | 7  |
| House Lights.....                        | 7  |
| Stage Luminaires.....                    | 8  |
| Patching .....                           | 8  |
| Power.....                               | 8  |
| Cabling .....                            | 8  |
| AUDIO.....                               | 9  |
| Control points .....                     | 9  |
| Control and Amplification .....          | 9  |
| Speakers.....                            | 9  |
| Playback.....                            | 9  |
| Patching .....                           | 9  |
| Cabling .....                            | 10 |
| Power.....                               | 10 |
| BACKSTAGE .....                          | 10 |
| Communications .....                     | 10 |
| Dressing Rooms .....                     | 10 |
| Kichenette.....                          | 10 |
| Stage Door .....                         | 10 |
| ADDITIONAL FACILITIES & INFORMATION..... | 12 |
| Staffing.....                            | 12 |
| Venue Plans .....                        | 12 |
| Venue Information.....                   | 12 |

## STAFF CONTACTS

### Technical Director

Mobile 0420 578 459  
Email Address rohan.cutler@act.gov.au  
Phone Number 02 6243 5721

### Rohan Cutler

### Venue

Phone number: 02 6243 5711  
Fax number: 02 6243 5721  
Website: www.canberratheatrecentre.com.au

### Head of Lighting

Mobile 0422 105 250  
Email Address stefan.wronski@act.gov.au  
Phone Number 02 6243 5734

### Stefan Wronski

### Head of Staging

Mobile 0411 892542  
Email Address loki.clarke@act.gov.au  
Phone Number 02 6243 5758

### Loki Clarke

### Head of Audio

Mobile 0417 015644  
Email Address petar.milinkovic@act.gov.au  
Phone Number 02 6243 5759

### Petar Milinkovic

### Box Office Manager

Phone Number 02 6290 9377  
Email Address sam.hardiman@act.gov.au  
Fax Number 02 6230 1098

### Sam Hardiman

### Stage Door

Phone Number 02 6243 5733 (Manned as required)

### Venue Address

**Canberra Playhouse  
Civic Square London Circuit  
Canberra ACT 2601**

### Venue Postal Address

**Canberra Theatre Centre  
PO Box 226  
Canberra ACT 2601**

# STAGE

## Brief Stage Description

The floor is ½" ply sheeting overlaid with black Masonite sheeting. The floor is not sprung. If the floor is deemed to be unsuitable for the purpose of the hire, the hirer shall, at its own cost, provide suitable floor treatment so that the floor is appropriate for the activity the hirer is undertaking.

**Please note:** Painting, nailing or screwing the flooring or Masonite is **not** permitted.

West Wall has dance mirrors. These are covered with panelling for performances.

East Wall has windows. These are covered with panelling for performances.

Stage distributed load limit      **750 kg/m<sup>2</sup>**

Stage point load limit            **450kg**

Stage rake                              **No**

## Stage Dimensions

### Proscenium

Width                                  **Max. 14m - Min 11m**

Height                                 **Max 3.4m**

### Setting Line

None

### Overhead obstructions

Fixed grid at 3.4m above Finished Floor Level.

## Auditorium

Auditorium consists of relocatable seating banks on risers. See attached plans.

Please note that the venue hire fee includes the seating configuration in the standard formation of portrait mode. Any changes to this formation may result in additional fees.

Seating capacity in portrait mode            **92**

Seating capacity in landscape mode        **99**

## Bump in Restrictions

While it is understood that partial assembly is required for some staging and set pieces in the CYS, general construction is **not** permitted on site. This includes:

- Painting. Spray or otherwise
- Cutting of timbers or metals
- Hot work such as welding
- Any modification of the venue or its equipment

## Drapery

| *Type        | Material   | Colour | Width | Height | Quantity |
|--------------|------------|--------|-------|--------|----------|
| Tabs/masking | Wool, flat | Black  | 4m    | 3.2m   | 6        |

## Access Equipment

### Ladders

- 2 x Aluminium Step ladders
- 1 x Mobile ladder (stock picker)

## Stage Covers

|            |                     |
|------------|---------------------|
| Style      | Tarkett             |
| Dimensions | 8 rolls of 2m x 12m |
| Colour     | Black               |

## Stage Traps

None

## Safety Curtain

Safety Curtain installed      **No**

## Loading Dock

**Access:** Truck access is via car park off Theatre Lane.  
 Limited access is available to the loading dock doors.

|                     |                                      |
|---------------------|--------------------------------------|
| Loading Dock Height | <b>ground level</b>                  |
| Door Dimensions     | <b>Approx. 3.2m High x 3.0m Wide</b> |

## Rigging Notes

The Head Mechanist is only too pleased to answer any questions with regards to rigging.

## Staging Notes

All flown items must be rigged with rated equipment and is subject to approval by a venue representative.

## Parking

There is no parking for truck or cars at the Canberra Theatre Centre.  
 A pay car park is available 50 metres away.

# LIGHTING

## Positions

**Stage LX Bars** Fixed grid at 3.4m. This may not be moved  
See grid plan for LX bar locations

## Control

Available Positions **Control Booth, other positions as required**  
Lighting desk **ETC Element 40**  
Output Parameters **1024 (full spec at [www.etconnect.com](http://www.etconnect.com) )**  
Signal distribution **Two Streams of DMX**  
Wireless Remote riggers available **No**  
Signal output **DMX 512**  
Data distribution Four breakout boxes at grid level contain Cat 6, DMX, Mic lines and speaker outputs.  
2 x DMX run to Dimmer Room

## Dimmer Racks

**Total Dimmers** **48**  
**Dimmer Locations** **FOH Dimmer Room**  
2.4Kw Dimmer Racks **LSC GenVI**  
Total dimmers @ 2.4kw per dimmer **48**

## House Lights

Independent control **No**  
Control positions **From console (two dimmers generally required)**  
Fade time adjustable **Yes**

## Stage Luminaires

### Profiles

| Make    | Model    | Angle | Detail / Accessories                       | Watt | Numbers | Totals |
|---------|----------|-------|--|------|---------|--------|
| Prolite | PR5 zoom | 15/30 | Irises and "B" size gobo holders available | 500  | 20      | 20     |

### Fresnel's

| Make    | Model | Detail / Accessories     | Watt | Numbers | Totals |
|---------|-------|--------------------------|------|---------|--------|
| Prolite | PR5 F | Complete with barn doors | 500  | 20      | 20     |

## Patching

| Location                  | Quantity | Comments                                  | Detail / Accessories                           |
|---------------------------|----------|---|--|
| Loading dock wall (south) | 12       | Above grid                                | Patch points have 48 dimmers available to them |
| Mirror wall (west)        | 12       | Above grid                                |  |
| Foyer wall (north)        | 12       | Above grid                                |  |
| Window Wall (east)        | 12       | Above grid                                |  |
| Ceiling centre            | 12       | Above grid                                |  |
| Old patch                 | 15       | Distributed below grid in groups of three |  |

## Power

### Single phase

1 x 10amp in each corner at floor level. Single 16Amp circuit

## Cabling

### 240v Extension Cable

- (10) 10m Red sleeve
- (20) 5m Blue sleeve
- (15) 1.5m Yellow sleeve. In patch bay
- (20) 1.5m White sleeve



# AUDIO

## Control points

Control Booth – Yes  
Auditorium – N/A  
Total Seat Allocation – N/A

## Control and Amplification

### System Processing

ARX EQ60 Graphic EQ

### Consoles

Presonus StudioLive AR12

### Amplifiers

None

### EQ/FX

Contact Technical Director

### Compressor/Gate/Limiter

Contact Technical Director

## Speakers

### FOH Speakers

(2) QSC KW122 1000W Active Loudspeaker

### Foldback

(2) RCF NX M10-A Active Loudspeaker  
(8) Meyer UM1P (shared between all venues, available on request)

## Playback

### CD player

Denon DN-D4500

### Microphones

Available on request

### Wireless Microphones

Available on request. Additional charges apply.

### Accessories

Microphone stands and other accessories available on request, subject to availability.

## Patching

Patch points mounted in ceiling

## Cabling

Available on request

## Power

There is no Audio Only Separate Earth power available in the Courtyard Studio

# BACKSTAGE

## Communications

There are no communications systems in the Courtyard Studio.

There is no Paging or Show Relay system in the Courtyard Studio.

There is no Cue Light system available in the Courtyard Studio.

To discuss communications options, contact the Technical Director

## Dressing Rooms

| Dressing Room | Capacity | Toilets | Shower | Details                               |
|---------------|----------|---------|--------|---------------------------------------|
| 1             | 4        | No      | No     | Separate all access toilet and shower |
| 2             | 10       | No      | No     | Separate all access toilet and shower |

## Kichenette

### Sink with hot and cold water

1 x Fridge

1 x Zip boiler

1 x First aid kit

### Internet access

Wifi available, no DSL

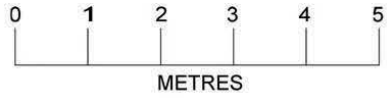
## Stage Door

### Access

Access is via Administration doors facing Legislative Assembly Building. Stage door is available on request.

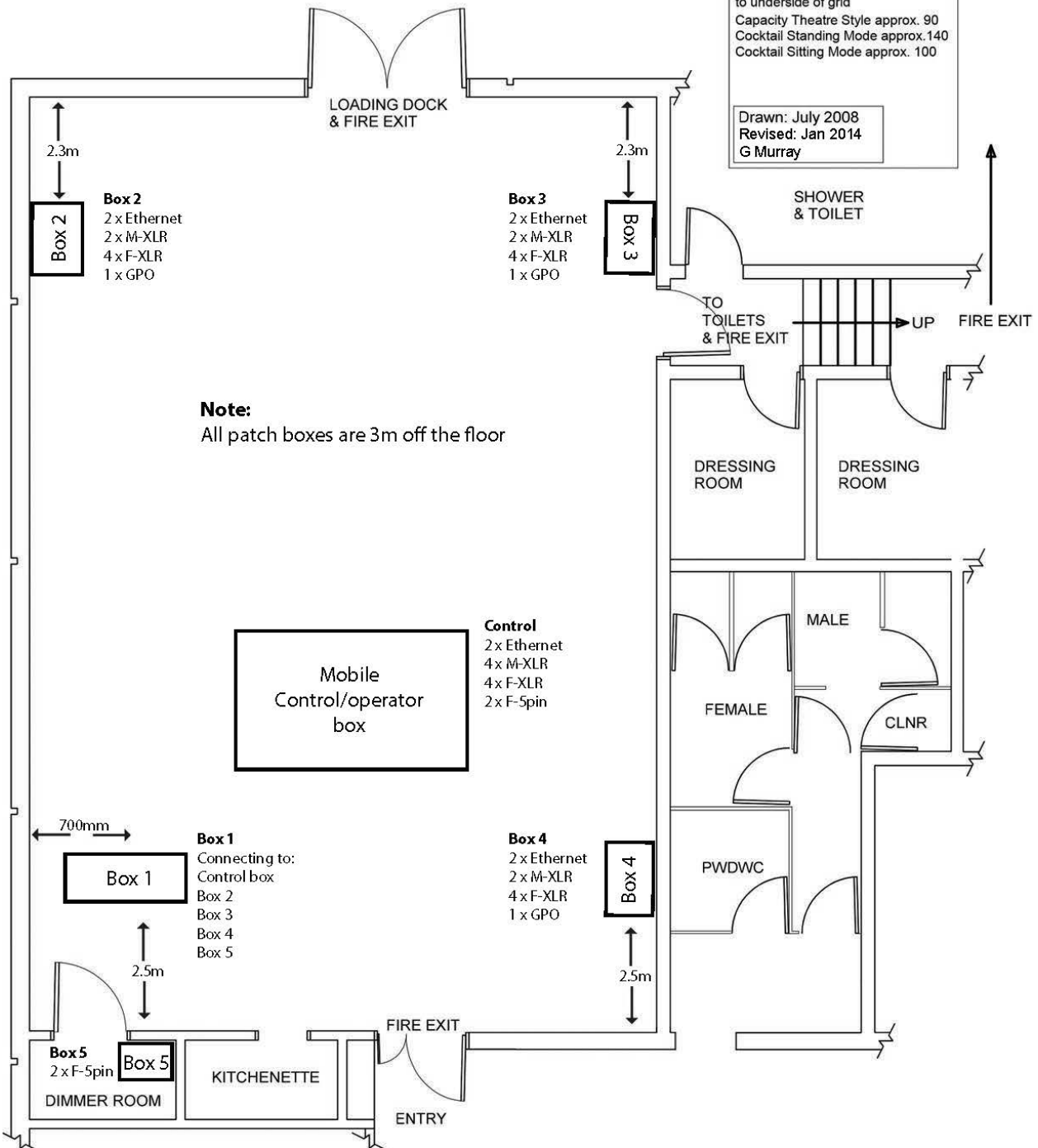
# CANBERRA THEATRE CENTRE COURTYARD STUDIO

## AV PATCHING



Dimensions: 15.5m x 10.5m  
 Height: Approx. 3.490m  
 to underside of grid  
 Capacity Theatre Style approx. 90  
 Cocktail Standing Mode approx. 140  
 Cocktail Sitting Mode approx. 100

Drawn: July 2008  
 Revised: Jan 2014  
 G Murray



# **ADDITIONAL FACILITIES & INFORMATION**

## **Staffing**

CTC staff are only required when smoke isolation is on. Contact Technical Director for further information.

## **Venue Plans**

### **Venue Plan Available**

YES, hard copy at 1:50 can be mailed, or a PDF, VWX, DWG or DXF file emailed upon request.  
Plan is available for download on the Canberra Theatre Centre website.

### **Venue Section Available**

YES, hard copy at 1:50 can be mailed, or a PDF, VWX, DWG or DXF file emailed upon request.  
Plan is available for download on the Canberra Theatre Centre website.

## **Venue Information**

The Canberra Theatre Centre has three venues available for hire:

The Canberra Theatre 1244 seats stall only

The Canberra Playhouse 614 seats, stalls and two balconies

The Courtyard Studio has up to 92 seats available depending on configuration.