

CANBERRA THEATRE CENTRE

Courtyard Studio

Technical Specifications

Schedule 13

Updated
11/01/2021

The information in the following document was true and correct at the time of printing

**The Canberra Theatre Centre reserves the right to adjust its inventory and specifications
without notice**

Contents

STAFF CONTACTS.....	4
STAGE.....	5
Auditorium.....	5
Quantity	6
Access Equipment.....	6
Stage Covers	6
Loading Dock.....	6
Rigging Notes	6
Staging Notes	6
Parking	6
LIGHTING.....	7
Positions.....	7
Control	7
Dimmer Racks	7
House Lights.....	7
Stage Luminaires.....	8
Patching	8
Power.....	8
Cabling	8
AUDIO.....	9
Control points	9
Control and Amplification	9
Speakers.....	9
Playback.....	9
Patching	9
Cabling	10
Power.....	10
BACKSTAGE	10
Communications	10
Dressing Rooms	10
Kichenette.....	10
Stage Door	10
ADDITIONAL FACILITIES & INFORMATION.....	12
Staffing.....	12
Venue Plans	12
Venue Information.....	12

STAFF CONTACTS

Technical Director

Mobile

Email Address

Phone Number

Rohan Cutler

0420 578 459

rohan.cutler@act.gov.au

02 6243 5721

Technical Producer

Phone Number:

Mobile Number:

Email Address:

Roni Wilkinson

02 6243 5780

0415 938 330

roni.wilkinson@act.gov.au

Head of Lighting

Mobile

Email Address

Phone Number

Stefan Wronski

0422 105 250

stefan.wronski@act.gov.au

02 6243 5734

Head of Staging

Mobile

Email Address

Phone Number

Loki Clarke

0411 892542

loki.clarke@act.gov.au

02 6243 5758

Head of Audio

Mobile

Email Address

Phone Number

Petar Milinkovic

0417 015644

petar.milinkovic@act.gov.au

02 6243 5759

Box Office Manager

Phone Number

Email Address

Fax Number

Sam Hardiman

02 6290 9377

sam.hardiman@act.gov.au

02 6230 1098

Venue Address

**Canberra Playhouse
Civic Square London Circuit
Canberra ACT 2601**

Venue Postal Address

**Canberra Theatre Centre
PO Box 226
Canberra ACT 2601**

Website:

www.canberratheatrecentre.com.au

STAGE

Brief Stage Description

The floor is ½" ply sheeting overlaid with black Masonite sheeting. The floor is not sprung. If the floor is deemed to be unsuitable for the purpose of the hire, the hirer shall, at its own cost, provide suitable floor treatment so that the floor is appropriate for the activity the hirer is undertaking.

Please note: Painting, nailing or screwing the flooring or Masonite is **not** permitted.

West Wall has dance mirrors. These are covered with panelling for performances.

East Wall has windows. These are covered with panelling for performances.

Stage distributed load limit **750 kg/m²**

Stage point load limit **450kg**

Stage rake **No**

Stage Dimensions

Proscenium

Width **Max. 14m - Min 11m**

Height **Max 3.4m**

Setting Line

None

Overhead obstructions

Fixed grid at 3.4m above Finished Floor Level.

Auditorium

Auditorium consists of relocatable seating banks on risers. See attached plans.

Please note that the venue hire fee includes the seating configuration in the standard formation of portrait mode. Any changes to this formation may result in additional fees.

Seating capacity in portrait mode **92**

Seating capacity in landscape mode **99**

Bump in Restrictions

While it is understood that partial assembly is required for some staging and set pieces in the CYS, general construction is **not** permitted on site. This includes:

- Painting. Spray or otherwise
- Cutting of timbers or metals
- Hot work such as welding
- Any modification of the venue or its equipment

Drapery

*Type	Material	Colour	Width	Height	Quantity
Tabs/masking	Wool, flat	Black	4m	3.2m	6

Access Equipment

Ladders

- 2 x Aluminium Step ladders
- 1 x Mobile ladder (stock picker)

Stage Covers

Style	Tarkett
Dimensions	8 rolls of 2m x 12m
Colour	Black

Stage Traps

None

Safety Curtain

Safety Curtain installed **No**

Loading Dock

Access: Truck access is via car park off Theatre Lane.
 Limited access is available to the loading dock doors.

Loading Dock Height	Ground level
Door Dimensions	Approx. 3.2m High x 3.0m Wide

Rigging Notes

The Head Mechanist is only too pleased to answer any questions with regards to rigging.

Staging Notes

All flown items must be rigged with rated equipment and is subject to approval by a venue representative.

Parking

There is no parking for truck or cars at the Canberra Theatre Centre.
 A pay car park is available 50 metres away.

LIGHTING

Positions

Stage LX Bars Fixed grid at 3.4m. This may not be moved
See grid plan for LX bar locations

Control

Available Positions **Control Booth, other positions as required**
Lighting desk **ETC Element 40**
Output Parameters **1024 (full spec at www.etconnect.com)**
Signal distribution **Two Streams of DMX**
Wireless Remote riggers available **No**
Signal output **DMX 512**
Data distribution Four breakout boxes at grid level contain Cat 6, DMX, Mic lines and speaker outputs.
2 x DMX run to Dimmer Room

Dimmer Racks

Total Dimmers **48**
Dimmer Locations **FOH Dimmer Room**
2.4Kw Dimmer Racks **LSC GenVI**
Total dimmers @ 2.4kw per dimmer **48**

House Lights

Independent control **No**
Control positions **From console (two dimmers generally required)**
Fade time adjustable **Yes**

Stage Luminaires

Profiles

Make	Model	Angle	Detail / Accessories	Watt	Numbers	Totals
Prolite	PR5 zoom	15/30	Irises and "B" size gobo holders available	500	20	20

Fresnel's

Make	Model	Detail / Accessories	Watt	Numbers	Totals
Prolite	PR5 F	Complete with barn doors	500	20	20

Patching

Location	Quantity	Comments	Detail / Accessories
Loading dock wall (south)	12	Above grid	Patch points have 48 dimmers available to them
Mirror wall (west)	12	Above grid	
Foyer wall (north)	12	Above grid	
Window Wall (east)	12	Above grid	
Ceiling centre	12	Above grid	
Old patch	15	Distributed below grid in groups of three	

Power

Single phase

1 x 10amp in each corner at floor level. Single 16Amp circuit

Cabling

240v Extension Cable

(10) 10m Red sleeve

(20) 5m Blue sleeve

(15) 1.5m Yellow sleeve. In patch bay

(20) 1.5m White sleeve

AUDIO

Control points

Control Booth – Yes
Auditorium – N/A
Total Seat Allocation – N/A

Control and Amplification

System Processing

ARX EQ60 Graphic EQ

Consoles

Presonus StudioLive AR12

Amplifiers

None

EQ/FX

Contact Technical Director

Compressor/Gate/Limiter

Contact Technical Director

Speakers

FOH Speakers

(2) QSC KW122 1000W Active Loudspeaker

Foldback

(2) RCF NX M10-A Active Loudspeaker
(8) Meyer UM1P (shared between all venues, available on request)

Playback

CD player

Denon DN-D4500

Microphones

Available on request

Wireless Microphones

Available on request. Additional charges apply.

Accessories

Microphone stands and other accessories available on request, subject to availability.

Patching

Patch points mounted in ceiling

Cabling

Available on request

Power

There is no Audio Only Separate Earth power available in the Courtyard Studio

BACKSTAGE

Communications

There are no communications systems in the Courtyard Studio.

There is no Paging or Show Relay system in the Courtyard Studio.

There is no Cue Light system available in the Courtyard Studio.

To discuss communications options, contact the Technical Director

Dressing Rooms

Dressing Room	Capacity	Toilets	Shower	Details
1	4	No	No	Separate all access toilet and shower
2	10	No	No	Separate all access toilet and shower

Kichenette

Sink with hot and cold water

1 x Fridge

1 x Zip boiler

1 x First aid kit

Internet access

Wifi available, no DSL

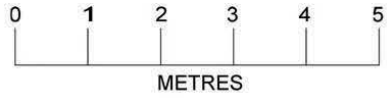
Stage Door

Access

Access is via Administration doors facing Legislative Assembly Building. Stage door is available on request.

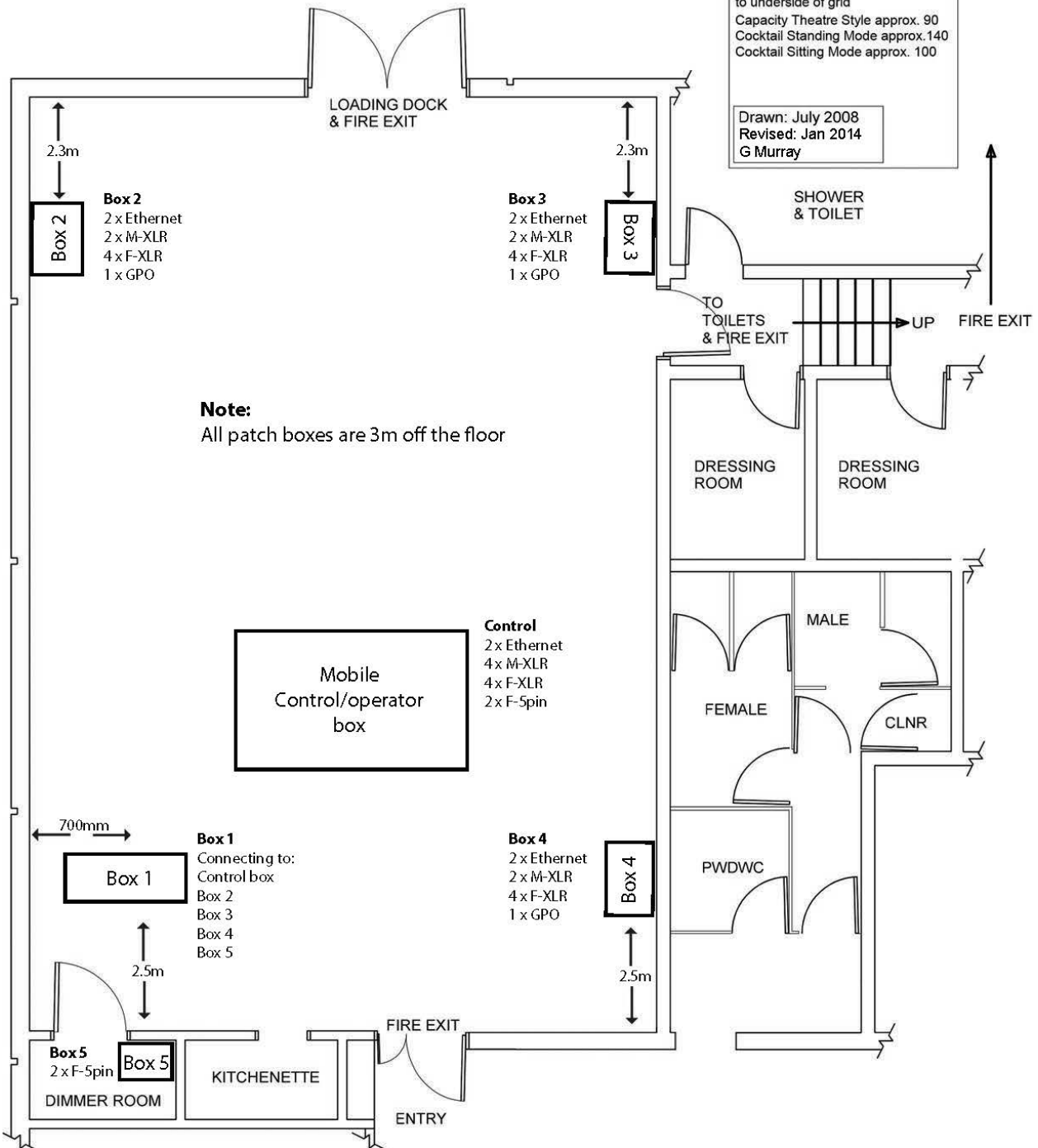
CANBERRA THEATRE CENTRE COURTYARD STUDIO

AV PATCHING



Dimensions: 15.5m x 10.5m
 Height: Approx. 3.490m
 to underside of grid
 Capacity Theatre Style approx. 90
 Cocktail Standing Mode approx. 140
 Cocktail Sitting Mode approx. 100

Drawn: July 2008
 Revised: Jan 2014
 G Murray



ADDITIONAL FACILITIES & INFORMATION

Staffing

CTC staff are only required when smoke isolation is on. Contact Technical Director for further information.

Venue Plans

Venue Plan Available

YES, hard copy at 1:50 can be mailed, or a PDF, VWX, DWG or DXF file emailed upon request. Plan is available for download on the Canberra Theatre Centre website.

Venue Section Available

YES, hard copy at 1:50 can be mailed, or a PDF, VWX, DWG or DXF file emailed upon request. Plan is available for download on the Canberra Theatre Centre website.

Venue Information

The Canberra Theatre Centre has three venues available for hire:

The Canberra Theatre 1244 seats stall only

The Canberra Playhouse 614 seats, stalls and two balconies

The Courtyard Studio has up to 92 seats available depending on configuration.